

Classic Edge 360 with 1 Pump Installed

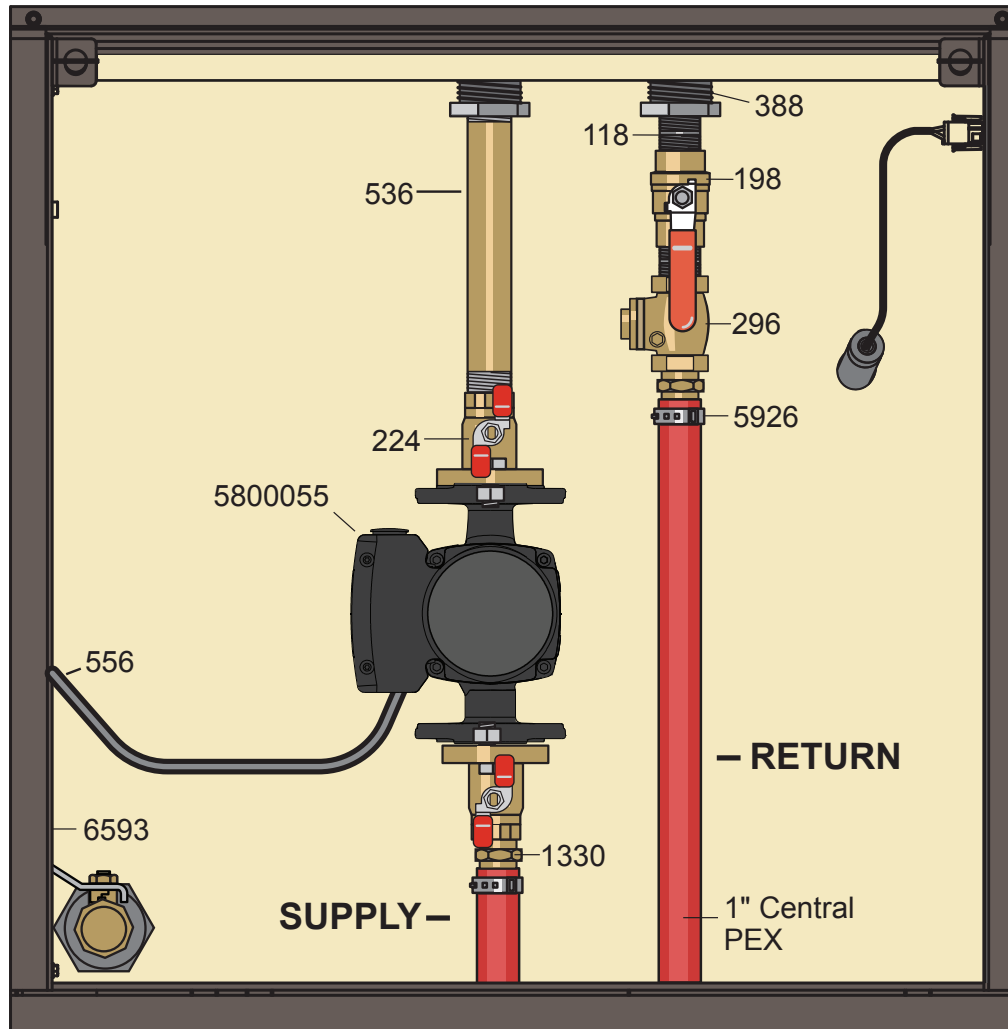
1 - Pump Parts List*

Qty	p/n	Description
2	118	Close Nipple, 3/4"
1	198	Ball Valve, 3/4"
1	224	Isolation Flange Kit, 3/4"
1	536	Brass Nipple, 3/4" x 7"
1	296	Swing Check Valve, 3/4"
2	388	Hex Bushing, 1-1/4" x 3/4"
1	556	Power Supply Cord, 32"
2	1330	MPT to PEX, 3/4" x 1"
2	5926	Stainless Steel Clamp Crimp Ring, 1"
1	6593	Grounding Rod Kit
1	5800055	Pump, UPMS 20-58 F

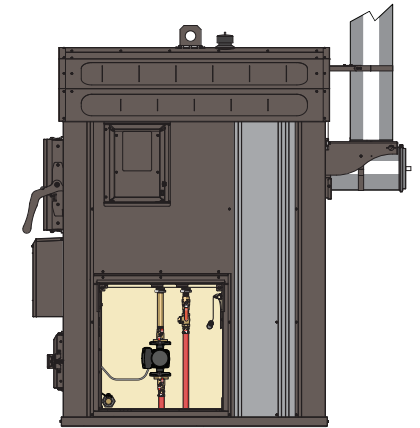
*Parts and accessories sold separately.
Pump size may vary.

NOTE

Grounding Rod Kit (p/n 6593) must be installed with every furnace.



For illustration purposes only.



Area of Focus

Ground Rod Kit Install

